

Alaska DMV Driving Knowledge Test 3

Official Sample Test: 20 MCQs

Time: 25 minutes

Passing Marks: 16 correct answers to pass.

1. Excluding business districts, alleys, school zones and residential districts, unless otherwise posted, what is the speed limit on Alaskan roadways:

- A. 45
- B. 60
- C. 50
- D. 55

Answer: D

2. This sign means that you: (IMG Park)



- A. You cannot park, but you can stop to discharge passengers.
- B. You cannot park, but you can stop there if you stay in the vehicle.
- C. You cannot park, stop, or stand there.
- D. None of these.

Answer: C

3. Which one of the following is not a night driving safety tip?

- A. Keep windshield clean.
- B. Tinted windshields affect night vision.
- C. Carry a flashlight and flares.
- D. Look into headlights of oncoming vehicles.

Answer: D

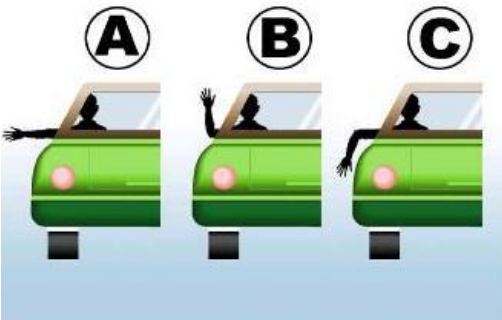
4. When you see the sign above, you are allowed to:



- A. Enter the street if you're only going less than one block.
- B. Stop at the sign.
- C. Drive in reverse into the street if you're only going less than a block.
- D. None of these.

Answer: D

5. Which illustration shows the hand signal for a right turn



- A. Image B
- B. Image A
- C. Image C
- D. None of the above.

Answer: A

6. To prevent being struck from behind:

- A. Drive a little faster than the rest of traffic to widen the gap between you and the vehicle behind you.
- B. Brake harder than usual.
- C. Keep pace with the traffic.
- D. Drive slower than the rest of the traffic to better control your vehicle.

Answer: C

7. You are stopped at a railroad crossing and the train has just passed. You can:

- A. Look to see if another train is coming and then cross the tracks if clear.
- B. Pull aside to have a better view and then cross the tracks.
- C. Start to cross the tracks.
- D. Wait 20 seconds to cross the tracks.

Answer: A

8. If you are involved in a crash, you are required to do what right away?

- A. Warn other traffic.
- B. Help anyone who may be hurt.
- C. Stop at once.
- D. All of the above.

Answer: D

9. When parked facing downhill, the front wheels should be:

- A. Turned towards the curb or shoulder.
- B. Pointed straight ahead.
- C. Any direction.
- D. Turned away from the curb.

Answer: A

9. Sharing the road with large trucks can be dangerous. Which of the following is true?

- A. When passing you should look for the whole front of the truck in your rearview mirror before pulling in front of a truck.
- B. If you can't see the truck or bus driver in their side mirrors, they can't see you.
- C. Cutting in between the truck and a curb increases the possibility of a crash.
- D. All of the above.

Answer: D

10. To avoid a rear end collision with the car in front of you:

- A. Look for problems ahead.
- B. Watch for brake lights.
- C. Use the four-second rule.
- D. All of the above.

Answer: D

11. You see a flashing red ball. You should:

- A. Come to a complete stop.
- B. Proceed only when it is safe to do so.
- C. Proceed as if it were a stop sign.
- D. All of the above.

Answer: D

12. An orange triangle with red borders like this sign means:



- A. Slow moving vehicle.
- B. Detour.
- C. Work zone.
- D. Yield.

Answer: A

13. Vehicles operated by police, fire departments, and ambulances are equipped with sirens. When a siren is in operation on an emergency vehicle. You must:

- A. Slow down and drive with caution.
- B. Stop where you are.
- C. Drive to the nearest intersection and stop.
- D. Pull over to the side and stop clear of intersection.

Answer: D

14. In addition to reporting to the police and your insurance company when you are involved in a vehicle crash, when would proof of automobile liability insurance need to be provided to the DMV within 15 days?:

- A. Only when there is property damage over \$2,000 or more.
- B. Only when there is death or personal injury or property damage of \$501 or more.

- C. Only when you are at fault for the crash.
- D. Only when there is death or personal injury.

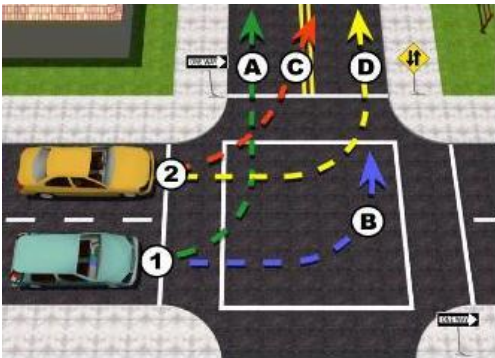
Answer: B

15. You are presumed to be driving under the influence (DUI) if the alcohol concentration of your breath is ___ or more:

- A. .40%
- B. .10%
- C. .05%
- D. .08%

Answer: D

15. When turning left from a one way street onto a two way street you should: (IMG)



- A. Start in position 2 and follow path D.
- B. Start in position 1 and follow path A.
- C. Start in position 2 and follow path C.
- D. Start in position 1 and follow path B.

Answer: A

16. When turning right from a two way street onto another two way street you should:



- A. Signal intention to turn for at least 100 feet.
- B. Look out of right side of windshield for pedestrians.
- C. Get into right lane well ahead of turn.
- D. All of these

Answer: D

17. A driver approaching a stopped school bus displaying flashing amber lights should always:

- A. Stop, and do not start until bus has passed you.
- B. Slow down and come to a complete stop.
- C. Blow your horn and pass slowly.
- D. Speed up and pass quickly.

Answer: B

18. When backing up your vehicle you should:

- A. Turn your body and head to the right to look out the rear window.
- B. Use only your mirrors to look out for things to the rear.
- C. Honk your horn so pedestrians and other vehicles know what you are doing.
- D. None of the above.

Answer: A

19. A solid yellow line on your side of the road and a broken line on the other means:

- A. Do not pass.
- B. Pass with care.
- C. Pass only after signaling.
- D. Pass only after honking your horn.

Answer: A

20. A revocation of your license means your driving privileges are taken away. Under which of the following situations will your license be revoked?

- A. Operating or owning an uninsured vehicle involved in a crash.
- B. Accumulating demerit points from repeated traffic violations.
- C. Being under 21 and using a false driver's license to obtain alcohol.
- D. None of the above.

Answer: C