

## CA Permit Practice Test 3 (California DMV Practice Test)

**Total Items: 46**

**Passing Marks: 38 correct answers to pass.**

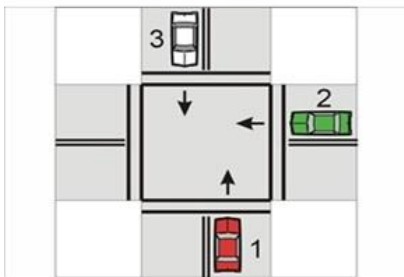
**1. The speed limit approaching a school crosswalk is:**

- A. 15 mph
- B. 20 mph
- C. 25 mph

**2. A school bus is stopped on a four-lane road with its stop-sign arm extended, you must:**

- A. Slow down and proceed with caution
- B. Stop if you are moving in the same direction of travel
- C. Stop regardless of your direction of travel

**3. All arrived at an uncontrolled intersection at the same time. Which has the right-of-way?:**



- A. Car 2
- B. Car 1
- C. Car 3

**4. When you see or hear an emergency vehicle approaching:**

- A. Immediately drive to the right side of the road and stop
- B. Slow down and permit the emergency vehicle to pass
- C. Remain alert and stay to the right

**5. This hand signal means:**



- A. Right turn
- B. Stopping or slowing
- C. Left turn

**6. You should give the right-of-way to any pedestrian who is:**

- A. In a marked crosswalk
- B. Crossing any street
- C. In any crosswalk or intersection

**7. When driving on wet roads you should:**

- A. Reduce your speed
- B. Pump your brakes occasionally
- C. Switch to low beam headlights

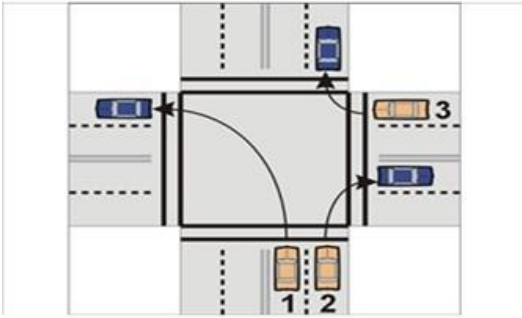
**8. Before entering a road from an alley or driveway, you must:**

- A. Flash your high beam headlights
- B. Sound your horn
- C. Stop before reaching the sidewalk

**9. When backing, you should:**

- A. Look in your inside rearview mirror
- B. Turn and look out the rear window
- C. Turn and look out the driver window

**10. The car that made a correct turn was:**



- A. Car 1
- B. Car 2
- C. Car 3

**11. If you are parking uphill and there is a curb, you should:**

- A. Turn your wheels to the right, toward the curb
- B. Keep your wheels straight ahead
- C. Turn your wheels to the left, away from the curb

**12. When no speed limit is posted, the maximum speed in a business or residential area is:**

- A. 30 mph
- B. 25 mph
- C. 35 mph

**13. When driving a vehicle, you may:**

- A. Talk to more than one passenger in the vehicle
- B. Write or read any text-based communication
- C. Watch, record or broadcast video

**14. If you intend to turn beyond an intersection, you should:**

- A. Wait to signal your turn until you are in the intersection
- B. Signal your turn as you approach the intersection
- C. Use a hand signal

**15. It is illegal to follow fire vehicles traveling in response to an alarm, within:**

- A. 500 feet
- B. 200 feet

C. 300 feet

**16. If you approach a school bus that is picking up or dropping off children, you must:**

- A. Stop and then proceed with caution
- B. Stop until the bus is moving or the stop sign arm is no longer extended
- C. Slow and yield the right-of-way to all pedestrians

**17. This hand signal means:**



- A. Right turn
- B. Stopping or slowing down
- C. Left turn

**18. It is safe to return to your lane after passing when:**

- A. You can see both headlights of the vehicle in your inside rearview mirror
- B. The driver you just passed signals you over
- C. When you can see the driver in your side mirror

**19. If you are parking downhill, you should:**

- A. Keep your wheels straight ahead
- B. Turn your wheels to the left, away from the edge of the road
- C. Turn your wheels to the right, toward the edge of the road

**20. What is speed limit near Railroad Tracks?**

- A. The speed limit is 10 mph within 50 feet of a railroad crossing
- B. The speed limit is 15 mph within 100 feet of a railroad crossing
- C. The speed limit is 20 mph within 100 feet of a railroad crossing

**21. It is illegal to park if a crosswalk is within:**

- A. 20 feet
- B. 10 feet

C. 15 feet

**22. Before you turn, you must signal continuously for at least:**

- A. 50 feet
- B. 100 feet
- C. 75 feet

**23. This hand signal means:**



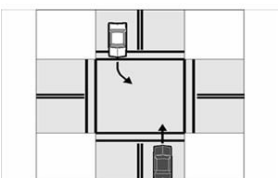
- A. Stopping or slowing down
- B. Left turn
- C. Right turn

**24. The wheelchair symbol in a parking space means that it is reserved for disabled persons:**



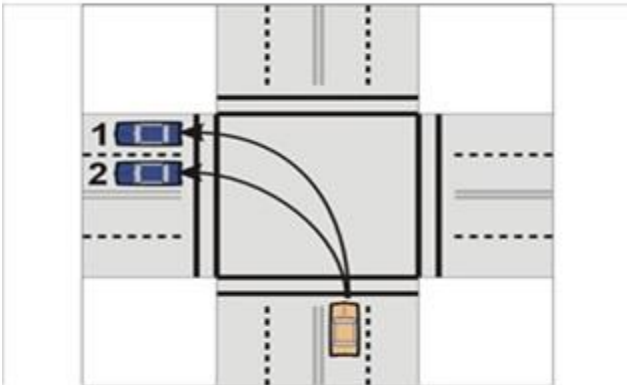
- A. But may be used by any driver if no other space is available
- B. But may be used by any driver for loading and unloading
- C. With no exceptions

**25. The white car will turn left. The black car will go straight. Which has the right-of-way?:**



- A. Black car
- B. White car
- C. Neither car

**26. To make a left turn, you should turn into:**

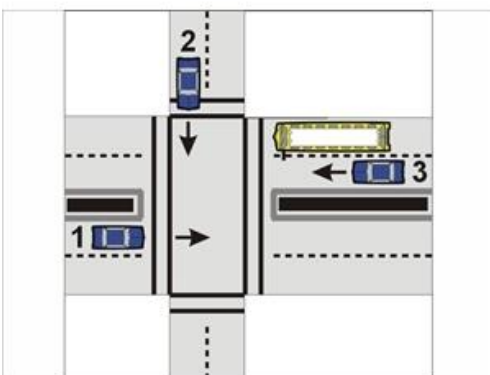


- A. Lane 1
- B. Lane 2
- C. Either lane 1 or lane 2

**27. It is illegal to park if a fire hydrant is within:**

- A. 15 feet
- B. 5 feet
- C. 10 feet

**28. A school bus with flashing lights has stopped on a divided highway. Who must stop?:**



- A. Cars 1 and 2
- B. Car 1 only
- C. Cars 2 and 3

**29. If you are parking uphill and there is no curb, you should:**

- A. Turn your wheels to the right, toward the edge of the road
- B. Turn your wheels to the left, away from the edge of the road
- C. Keep your wheels straight ahead

**30. This sign means:**



- A. Curves ahead
- B. Slippery when wet
- C. Hill ahead

**31. When observing law enforcement lights and/or sirens activated behind you, drivers should:**

- A. Immediately yield to the right side of the roadway
- B. Accelerate
- C. Brake immediately

**32. When stopped by law enforcement, drivers should:**

- A. Put the car in park and remain in the vehicle
- B. Keep your seatbelt fastened and hands on the steering wheel in a visible location
- C. All of the above

**33. When stopped by law enforcement, if there is a firearm in the vehicle, the driver should:**

- A. Keep your hands on the steering wheel in a visible location
- B. If requested, let the officer know that you have a firearm in the vehicle and where the firearm is located.
- C. All of the above

**34. Signing for or accepting a citation from a law enforcement officer:**

- A. Is not an admission of guilt or responsibility
- B. Is a promise to appear in the case of a criminal violation
- C. All of the above

**35. What do you do after a non-injury, fender bender collision?**

- A. A driver involved in a minor crash without injuries, should remove the vehicle from the roadway (Quick Clearance) if it is operable and can be moved safely.
- B. Stay put and wait for emergency responders.
- C. Immediately check your car for damage.

---

**Answer Keys:**

- 1. A
- 2. C
- 3. C
- 4. A
- 5. B
- 6. B
- 7. A
- 8. C
- 9. B
- 10. C
- 11. C
- 12. B
- 13. A
- 14. A
- 15. A
- 16. B
- 17. C
- 18. A
- 19. C



- 20. B
- 21. A
- 22. B
- 23. C
- 24. C
- 25. A
- 26. B
- 27. A
- 28. C
- 29. A
- 30. B
- 31. A
- 32. C
- 33. C
- 34. C
- 35. A